

ReNerve<sup>LTD</sup>



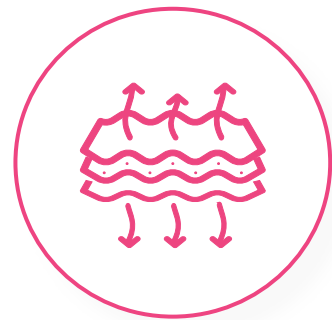
**Hydrated Deep  
Layer Dermis**

**Biologic matrix for  
dermal reconstruction**

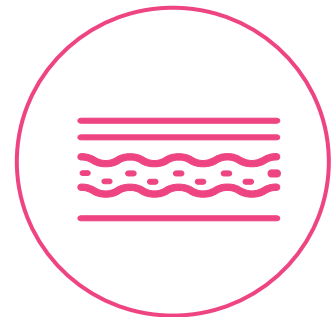


# Engineered for Tissue Support

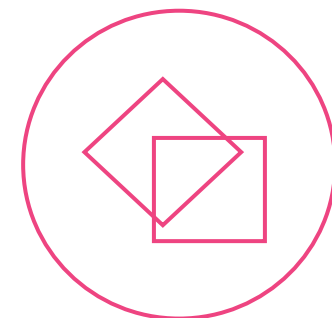
Empliq™ Dermal is a deep-layer acellular dermal matrix (ADM) sourced from donated human skin and designed to replace lost or damaged dermal tissue. Gentle processing maintains the structural properties and components of the extracellular matrix, creating an allograft dermis that can cover, support or reinforce soft tissue defects.



Basement membrane removed



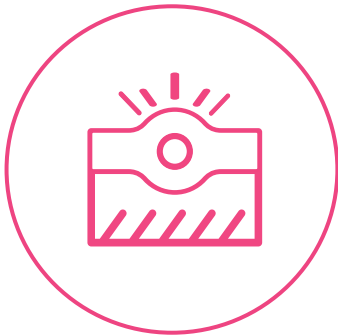
Maintains structure of native dermis<sup>1</sup>



Implantation-ready



Highly pliable



Strength comparable to  
native dermis<sup>1</sup>



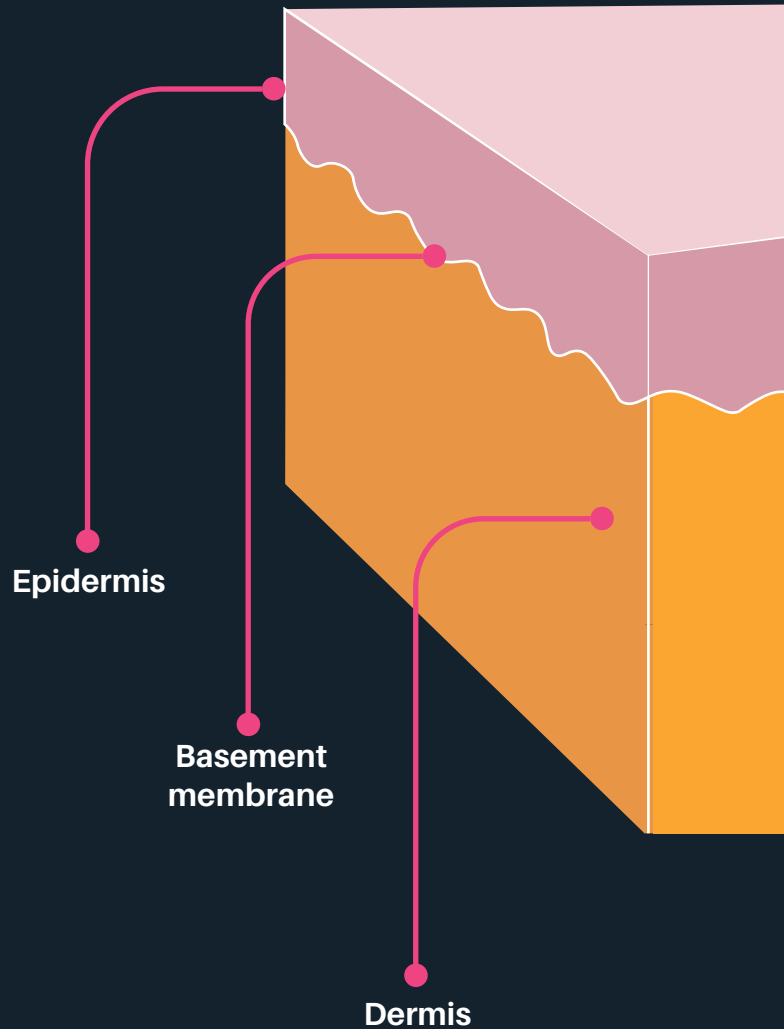
Sterile



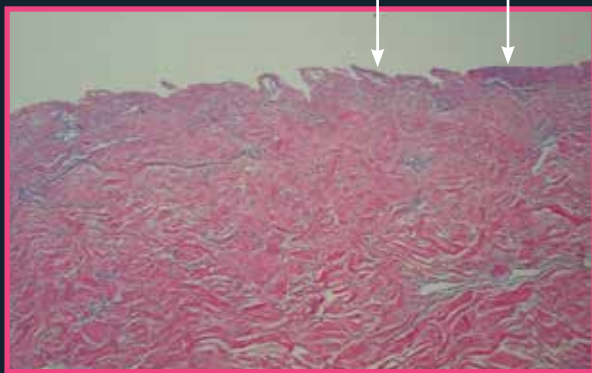
# Dual-Sided Dermal Allograft

The basement membrane complex separates the epidermis from the dermis and plays a role in binding the two layers. However, its presence may delay the overall healing process.

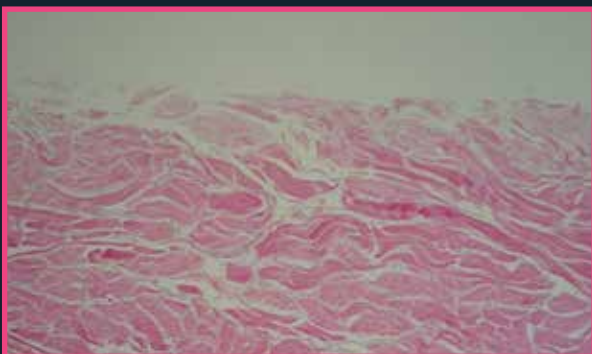
Empliq Dermal is processed to remove the basement membrane, allowing for cellular infiltration from both the superficial and deep aspects. Removal of the basement membrane creates natural perforations.



Basement membrane



Standard Acellular Dermal Matrix



Empliq Dermal

H&E stain, 10x magnification

---

Empliq Dermal is intended to be used to replace damaged skin tissue or to provide supplemental support, protection, reinforcement or covering for soft tissue defects.

# Less is More

Empliq™ Dermal is produced using a proprietary, gentle process designed to remove cellular debris while retaining key extracellular matrix components.

**1**

## Splitting

- Removal of epidermis and basement membrane
- Removal of non-uniform sections

**2**

## Decellularization

- Detergent rinse
- Saline rinses

**3**

## Preservation and Cutting

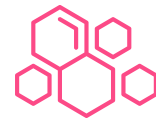
- Preservation solution
- Cutting to size

**4**

## Final Packaging

- Packaging
- Sterilization

## Results<sup>1</sup>



Retention of strong collagen network with no cross-linking



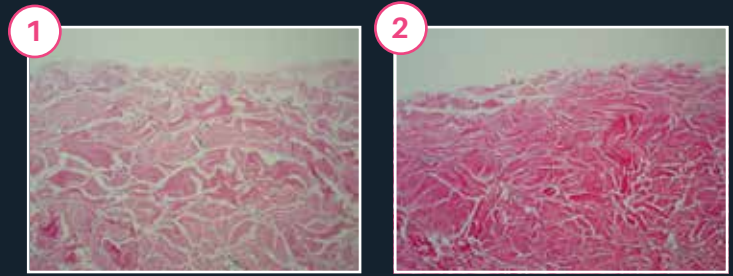
Maintains structure and composition of native dermis



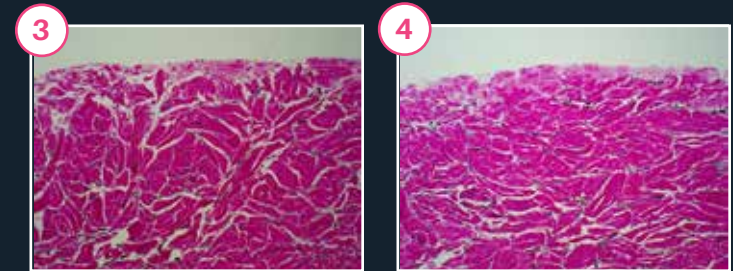
Sterility Assurance Level of  $10^{-6}$

# The Science of Empliq

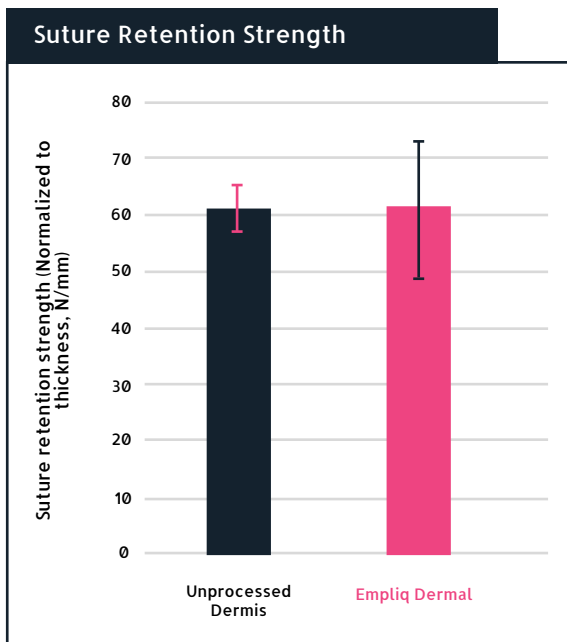
Histological data shows that Empliq Dermal (2) contains collagen microstructures similar to unprocessed dermis (1). Elastin and fibrin networks are also well preserved (4) compared with native tissue (3). This retention of structural components provides a matrix that allows for cellular infiltration, nutrient, and waste exchange.



H&E Stain, 10x magnification

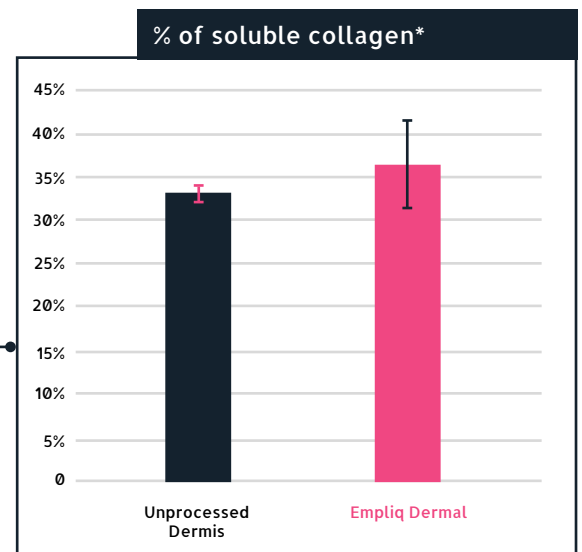


Verhoeff-Van Gieson Stain. Elastin is visible as dark grey or black dots, 10x magnification



Empliq Dermal demonstrates suture retention strength comparable to normal human skin.

Analysis of collagen composition revealed no significant difference in soluble collagen, confirming properties match those of human dermis.<sup>1</sup>



\*Data was generated from three samples per group.

# Ordering Information



**Empliq™ Hydrated Deep Layer Dermis**  
Biologic matrix for dermal reconstruction

**Thickness range: 0.40 - 0.80 mm**

Product Code	Size (cm) (length x width)	Shape
EM-DM04040	4 x 4	Sheet
EM-DM04080	4 x 8	Sheet
EM-DM10050	10 x 5	Sheet

**Thickness range: 0.90 - 1.99 mm**

Product Code	Size (cm) (length x width)	Shape
EM-DM04121	4 x 12	Sheet
EM-DM04161	4 x 16	Sheet
EM-DM06121	6 x 12	Sheet
EM-DM08161	8 x 16	Sheet
EM-DM12161	12 x 16	Sheet
EM-DM16201	16 x 20	Sheet
EM-DM20201	20 x 20	Sheet
EM-DM10201E	10 x 20	Ellipse
EM-DM13211E	13 x 21	Ellipse

ReNerve<sup>LTD</sup>



## Hydrated Deep Layer Dermis



Potential adverse events that may result from placement of Empliq products include but are not limited to wound or systemic infection, seroma, dehiscence, hypersensitivity, allergic or immune response, sloughing, graft failure, or disease transmission.

Physicians should review the package insert for product information, including indications, contraindications, precautions, storage and handling instructions, and warnings.

### Available Through

ReNerve Ltd  
7625 Golden Triangle Dr  
Suite G  
Eden Prairie, MN 55344



### Legal Manufacturer

Berkeley Biologics LLC  
880 Harbour Way South  
Suite 100  
Richmond, California, 94804

### Contact ReNerve

**Visit:** [www.renserve.com.au](http://www.renserve.com.au)  
**Email:** [info@renserve.com.au](mailto:info@renserve.com.au)  
**Phone:** +1.612.293.8673